



关于我们

ABOUT COMPANY

Shenzhen HengTongXing Techonology Co.,Ltd has already specialized in the production and customization of non-standard molds accessories for over 20+years in Shenzhen, China.Our main products include hardware,plastic mold accessories,machined parts,test fixtures,and a series of O E M non-standard parts processed according to drawings.All of these molds accessories are widely used for high-precision hardware,plastic,cars,communications,electronics,machines,and die-casting,etc.All our products are passed five strict quality inspections by Q A to ensure that the qualification rate reaches 98% when shipment.

We have professional engineer support,high efficiency sales team and competitive price superiority,all of which attract customers from all over the world.We export to over 40 countries,includingUSA,Iraq,Russia,Israel,Cameroon,Malaysia,Angola,Kazakhstan,Qatar,Morocco,Australia,Algeria,and Vietnam,etc.After more than eighteen years' development,we have achieved great progress.We are equipped with four workshops,over 60processing equipmentimported from Japan,and over 20 sets of special testing equipment including 3-dimensional high-end inspection instruments and full CNC testing so that our product can guarantee one hundred thousand punches without fracture,0 die change,which can increase output and reduce labor.

Our R&D department provide the strong technical support and enable us to receive all kinds of O E M, O D M projects. We can produce at least 10,000pcs molds per day.

This factory is HTX in China.We are a reliable supplier of non-standard molds accessories with 20+years official warranty.Our shared belief is that HTX could be the best mould factory in the world.We sincerely hope to cooperate with you!

深圳市恒通兴科技有限公司是位于中国深圳，20多年专注非标模具配件的生产与订制！我们主营五金、塑胶模具配件、机加工零件、检测治具夹具、及一系列按图定制的OEM非标件。这些配件可以广泛用于高精度五金、塑胶、汽车、通讯、电子，机械设备，压铸等。我们所有加工出来的产品都通过了5道品检部严格检测，确保出货品质合格率达98%以上。

我们通过专业的工程师队伍，高效的销售团队以及具有优势的价格吸引了来自于全球各地的客户。我们出口国家超过了40个，其中包括美国、伊拉克、俄罗斯、以色列、喀麦隆、马来西亚、安哥拉、哈萨克斯坦、卡塔尔、摩洛哥、澳大利亚、阿尔及利亚、越南。经过十几年的发展，我们取得了很大的进步，配有4个工厂，60多台日本进口加工设备，包括3次元高端检验仪器在内20多种检测设备，以及全程数控，所以我们的产品可以保证十万冲次不断裂，0换模，增加产量，减少人工。我们的工程部门提供强力的技术支持，使我们能够接受各种非标件定制。我们可以在一天加工出10,000件非标配件。

我们共同的信念是做中国乃至全世界最好的模具配件。

我们是拥有20多年官方授权的可靠非标模具配件供应商。我们期待与您的合作！



A-Type



B-Type

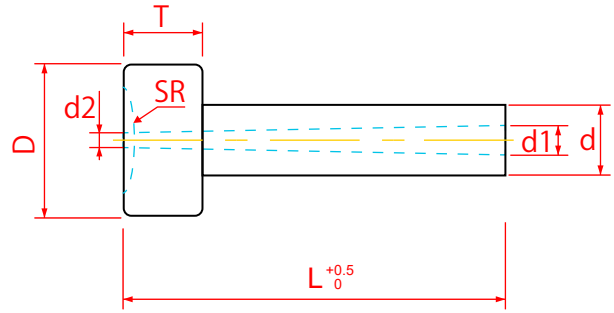
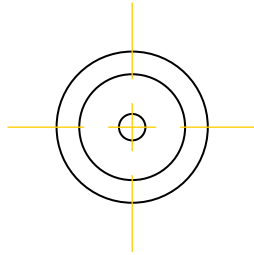


C-Type

注
NOTE

以上只是部分型号，我们可以根据客户的需求进行量身定制。
Note: the above is only part of the model, We could customized according to customer's requirements.

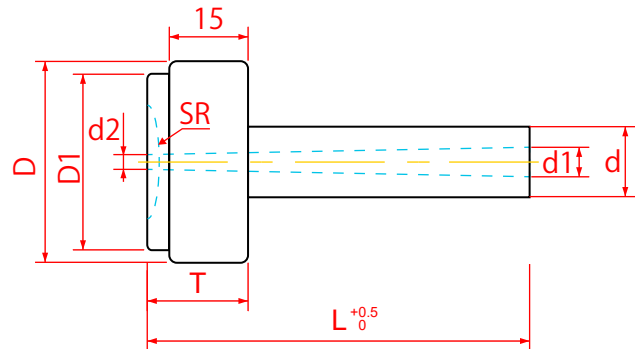
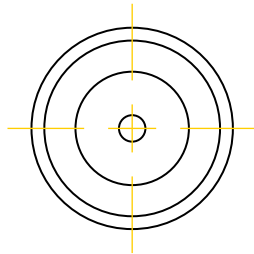
A-Type



单位Unit:mm

L	D	T	d	SR	d1	d2
30~200	30	15	8	20	6	3.2
			10		7.2	3.5
			12		8	3.5
			16		9.5	3.5
			20		10	3.5

B-Type



单位Unit:mm

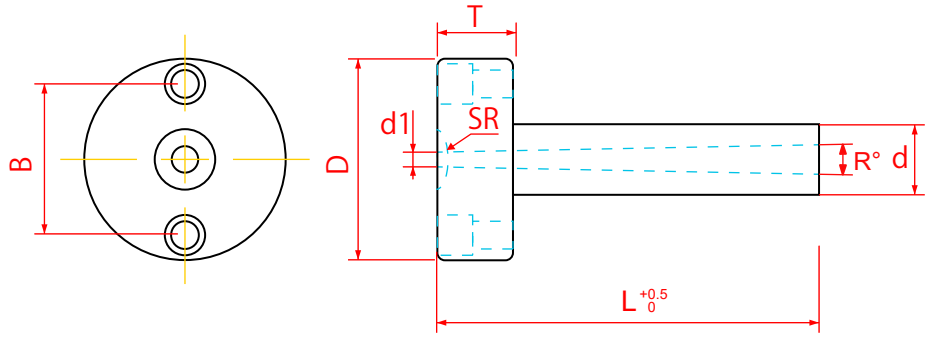
L	D	D1	T	d	SR	d1	d2
30~200	40	35	20	8	20	6	3.2
				10		7.2	3.5
				12		8	3.5
				16		9.5	3.5
				20		10	3.5

注
NOTE

以上只是部分型号，我们可以根据客户的需求进行量身定制。

Note: the above is only part of the model, We could customized according to customer's requirements.

C-Type



单位Unit:mm

D	T	d	SR	d	B	R (angle)	L
35	10	10	16	3.0	25	3°	50~120
	15	10		3.0			
		12		3.0			
		16		3.0			
		20		3.5			
40	10	10	16	3.0	30	3°	50~120
		12		3.0			50~150
		16		3.0			
		20		3.5			
	15	10		3.0	3°	50~120	
		12		3.0		50~150	
		16		3.0			
		20		3.5			
50	15	10	16	3.0	36	3°	50~120
		12		3.0			50~150
		16		3.0			
		20		3.5			

注
NOTE

以上只是部分型号，我们可以根据客户的需求进行量身定制。

Note: the above is only part of the model, We could customized according to customer's requirements.