



## 关于我们

### ABOUT COMPANY

Shenzhen HengTongXing Techonology Co.,Ltd has already specialized in the production and customization of non-standard molds accessories for over 20+years in Shenzhen, China.Our main products include hardware,plastic mold accessories,machined parts,test fixtures,and a series of O E M non-standard parts processed according to drawings.All of these molds accessories are widely used for high-precision hardware,plastic,cars,communications,electronics,machines,and die-casting,etc.All our products are passed five strict quality inspections by Q A to ensure that the qualification rate reaches 98% when shipment.

We have professional engineer support,high efficiency sales team and competitive price superiority,all of which attract customers from all over the world.We export to over 40 countries,includingUSA,Iraq,Russia,Israel,Cameroon,Malaysia,Angola,Kazakhstan,Qatar,Morocco,Australia,Algeria,and Vietnam,etc.After more than eighteen years' development,we have achieved great progress.We are equipped with four workshops,over 60processing equipmentimported from Japan,and over 20 sets of special testing equipment including 3-dimensional high-end inspection instruments and full CNC testing so that our product can guarantee one hundred thousand punches without fracture,0 die change,which can increase output and reduce labor.

Our R&D department provide the strong technical support and enable us to receive all kinds of O E M, O D M projects. We can produce at least 10,000pcs molds per day.

This factory is HTX in China.We are a reliable supplier of non-standard molds accessories with 20+years official warranty.Our shared belief is that HTX could be the best mould factory in the world.We sincerely hope to cooperate with you!

深圳市恒通兴科技有限公司是位于中国深圳，20多年专注非标模具配件的生产与订制！我们主营五金、塑胶模具配件、机加工零件、检测治具夹具、及一系列按图定制的OEM非标件。这些配件可以广泛用于高精度五金、塑胶、汽车、通讯、电子，机械设备，压铸等。我们所有加工出来的产品都通过了5道品检部严格检测，确保出货品质合格率达98%以上。

我们通过专业的工程师队伍，高效的销售团队以及具有优势的价格吸引了来自于全球各地的客户。我们出口国家超过了40个，其中包括美国、伊拉克、俄罗斯、以色列、喀麦隆、马来西亚、安哥拉、哈萨克斯坦、卡塔尔、摩洛哥、澳大利亚、阿尔及利亚、越南。经过十几年的发展，我们取得了很大的进步，配有4个工厂，60多台日本进口加工设备，包括3次元高端检验仪器在内20多种检测设备，以及全程数控，所以我们的产品可以保证十万冲次不断裂，0换模，增加产量，减少人工。我们的工程部门提供强有力的技术支持，使我们能够接受各种非标件定制。我们可以在一天加工出10,000件非标配件。

我们共同的信念是做中国乃至全世界最好的模具配件。

我们是拥有20多年官方授权的可靠非标模具配件供应商。我们期待与您的合作！



顶针  
Ejector Pin



托顶针  
Ejector Pin With Support



扁顶针  
Flat Ejector Pin



司筒  
Ejector Sleeve



托司筒  
Ejector Sleeve With Support

## 定制标准 (Custom standard) :

常规标准 (conventional standard) ; 台湾标准 (Taiwan standard) ;  
HSACO标准 (HSACO standard) ; 米思米标准 (Miesmi standard) ;  
DME标准 (DME standard) 。

注  
NOTE

以上只是部分型号，我们可以根据客户的需求进行量身定制。  
Note: the above is only part of the model, We could customized according to customer's requirements.

## 常规标准 (Conventional Standard)

杆直径Rod Diameter 单位Unit:(mm/Inch)		头部直径 Head Diameter		头部厚度 Head Thickness	
mm	Inch	mm	Inch	mm	Inch
0.8	0.0315	6	0.2362	4	0.1575
1-1.2	0.0394-0.0472	6	0.2362	4	0.1575
1.5	0.0590	6	0.2362	4	0.1575
2	0.0787	6	0.2362	4	0.1575
2.5	0.0984	6	0.2362	4	0.1575
3	0.1181	6	0.2362	4	0.1575
3.5	0.1378	7	0.2756	4	0.1575
4	0.1575	8	0.3150	5/6	0.1969/0.2362
4.5	0.1772	8	0.3150	5/6	0.1969/0.2362
5	0.1969	8/9	0.315/0.3543	5/6	0.1969/0.2362
5.5	0.2165	10	0.3937	6	0.2362
6	0.2362	10	0.3937	6	0.2362
7	0.2756	11	0.4330	6	0.2362
8	0.315	13	0.5118	8	0.3150
9	0.3543	14	0.5512	8	0.3150
9.5	0.374	15	0.5906	8	0.3150
10	0.3937	15	0.5906	8	0.3150
10.5	0.4134	16	0.6300	8	0.3150
11	0.4330	16	0.6300	8	0.3150
12	0.4724	17	0.6693	8	0.3150
13	0.5118	18	0.7087	8	0.3150
14	0.5512	19	0.7480	8	0.3150
15	0.5906	20	0.7874	8	0.3150
16	0.6300	21	0.8268	8	0.3150
20	0.7874	25	0.9843	8	0.3150
25	0.9843	30	1.1811	8	0.3150

## 台湾标准 (Taiwan Standard)

杆直径Rod Diameter 单位Unit:(mm/Inch)		头部直径 Head Diameter		头部厚度 Head Thickness	
mm	Inch	mm	Inch	mm	Inch
1	0.0394	6	0.2362	4	0.1575
1.5	0.0590	6	0.2362	4	0.1575
2	0.0787	6	0.2362	4	0.1575
2.5	0.0984	6	0.2362	4	0.1575
3	0.1181	6	0.2362	4	0.1575
3.5	0.1378	7	0.2756	4	0.1575
4	0.1575	8	0.3150	5/6	0.1969/0.2362
4.5	0.1772	8	0.3150	5/6	0.1969/0.2362
5	0.1969	8/9	0.315/0.3543	5/6	0.1969/0.2362
5.5	0.2165	10	0.3937	6	0.2362
6	0.2362	10	0.3937	6	0.2362
6.5	0.2559	11	0.4330	6	0.2362
7	0.2756	11	0.4330	6	0.2362
7.5	0.2953	13	0.5118	8	0.3150
8	0.3150	13	0.5118	8	0.3150
9	0.3543	14	0.5512	8	0.3150
10	0.3937	15	0.5906	8	0.3150
11	0.4330	16	0.6300	8	0.3150
12	0.4724	17	0.6693	8	0.3150
13	0.5118	18	0.7087	8	0.3150
14	0.5512	19	0.7480	8	0.3150
15	0.5906	20	0.7874	8	0.3150
16	0.6300	21	0.8268	8	0.3150
18	0.7087	24	0.9449	8	0.3150
20	0.7874	25	0.9843	8	0.3150
25	0.9843	30	1.1811	8	0.3150

## 台湾标准 (Taiwan Standard)

杆直径Rod Diameter 单位Unit:(mm/Inch)		头部直径 Head Diameter		头部厚度 Head Thickness	
mm	Inch	mm	Inch	mm	Inch
1	0.0394	2.5	0.0984	1.2	0.0472
1.5	0.0590	3	0.1181	1.5	0.0590
2	0.0787	4	0.1575	2	0.0787
2.5	0.0984	5	0.1969	2	0.0787
3	0.1181	6	0.2362	3	0.1181
3.5	0.1378	7	0.2756	3	0.1181
4	0.1575	8	0.2756	3	0.1181
4.5	0.1772	8	0.2756	3	0.1181
5	0.1969	10	0.3937	3	0.1181
5.5	0.2165	10	0.3937	3	0.1181
6	0.2362	12	0.3937	5	0.1969
6.5	0.2559	12	0.4724	5	0.1969
7	0.2756	12	0.4330	5	0.1969
7.5	0.2953	12	0.4330	5	0.1969
8	0.3150	14	0.5512	5	0.1969
9	0.3543	14	0.5512	5	0.1969
10	0.3937	16	0.6300	5	0.1969
11	0.4330	16/17	0.6300/0.6693	5	0.1969
12	0.4724	18	0.7087	7	0.2756
13	0.5118	20	0.7874	7	0.2756
14	0.5512	22	0.8661	7	0.2756
15	0.5906	22	0.8661	7	0.2756
16	0.6300	22	0.8661	7	0.2756
18	0.7087	24	0.9449	8	0.3150
20	0.7874	26	1.0236	8	0.3150
25	0.9843	32	1.2598	10	0.3937

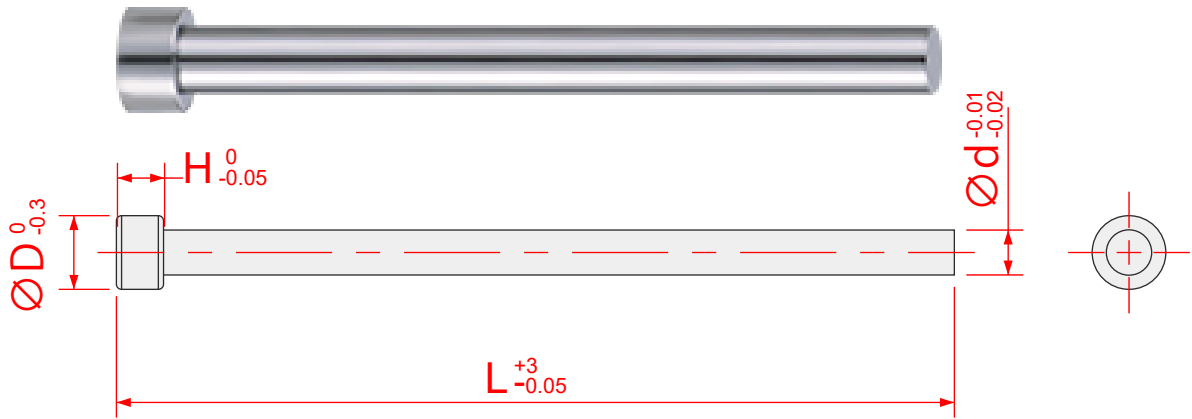
## DME标准 (DME standard)

杆直径Rod Diameter(d) 单位Unit:(mm/Inch)		头部直径(D) Head Diameter		头部厚度(H) Head Thickness	
mm	Inch	mm	Inch	mm	Inch
1.2	3/64	6	1/4	3	1/8
1.5	1/16	6	1/4	3	1/8
2	5/64	6	1/4	3	1/8
2.5	3/32	6	1/4	3	1/8
3	1/8	6	1/4	3	1/8
3.5	9/64	6	1/4	3	1/8
4	5/32	7	9/32	4	1/6
4.5	11/64	8	5/16	5	3/16
5	13/64	10	3/8	5	3/16
5.5	7/32	10	3/8	5	3/16
6	1/4	12	15/32	5	3/16
6.5	17/64	12	15/32	6	1/4
7	9/32	12	15/32	6	1/4
8	5/16	14	9/16	6	1/4
9	11/32	14	9/16	6	1/4
10	3/8	16	5/8	6	1/4
11	7/16	18	11/16	6	1/4
12	15/32	20	13/16	6	1/4
13	1/2	20	13/16	6	1/4
14	9/16	20	13/16	6	1/4
15	19/32	22	7/8	6	1/4
16	5/8	22	7/8	6	1/4
18	11/16	24	15/16	6	1/4
20	3/4	24	1-3/64	6	1/4
22	7/8	28	1-1/8	6	1/4
25	1	32	1-1/4	6	1/4

注  
NOTE

以上只是部分型号，我们可以根据客户的需求进行量身定制。

Note: the above is only part of the model, We could customized according to customer's requirements.



尺寸 (Size) : dxL

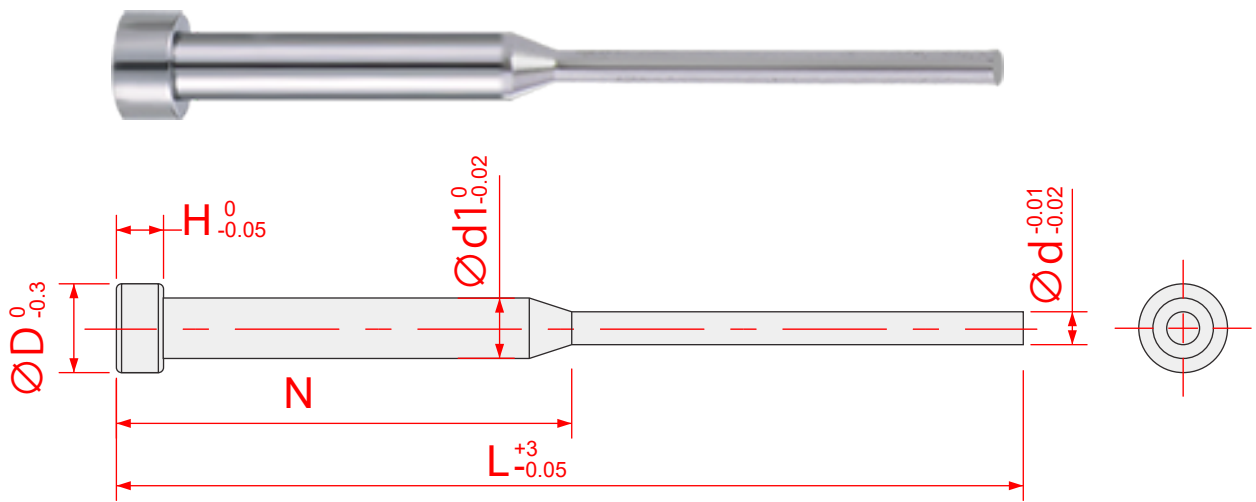
		长度 (L) Length (L)								
Inch		4"	6"	8"	10"	12"	14"	16"	18"	20"
mm		100	150	200	250	300	350	400	450	500

杆直径 Rod Diameter (d) 单位 Unit: (mm/Inch)		头部直径 (D) Head Diameter		头部厚度 (H) Head Thickness	
mm	Inch	mm	Inch	mm	Inch
1	0.0394	6	0.2362	4	0.1575
1.5	0.0590	6	0.2362	4	0.1575
2	0.0787	6	0.2362	4	0.1575
2.5	0.0984	6	0.2362	4	0.1575
3	0.1181	6	0.2362	4	0.1575
3.5	0.1378	7	0.2756	4	0.1575
4	0.1575	8	0.3150	6	0.2362
4.5	0.1772	8	0.3150	6	0.2362
5	0.1969	9	0.3150	6	0.2362
5.5	0.2165	10	0.3937	6	0.2362
6	0.2362	10	0.3937	6	0.2362
6.5	0.2559	11	0.4330	6	0.2362
7	0.2756	11	0.4330	6	0.2362
8	0.3150	13	0.5118	8	0.3150
9	0.3543	14	0.5512	8	0.3150
10	0.3937	15	0.5906	8	0.3150
11	0.4330	16	0.6300	8	0.3150
12	0.4724	17	0.6693	8	0.3150
13	0.5118	18	0.7087	8	0.3150
16	0.6300	21	0.8268	8	0.3150
20	0.7874	25	0.9843	8	0.3150
25	0.9843	30	1.1811	8	0.3150

注  
NOTE

以上只是部分型号，我们可以根据客户的需求进行量身定制。

Note: the above is only part of the model, We could customized according to customer's requirements.



尺寸 (Size) : d1xNxdxL

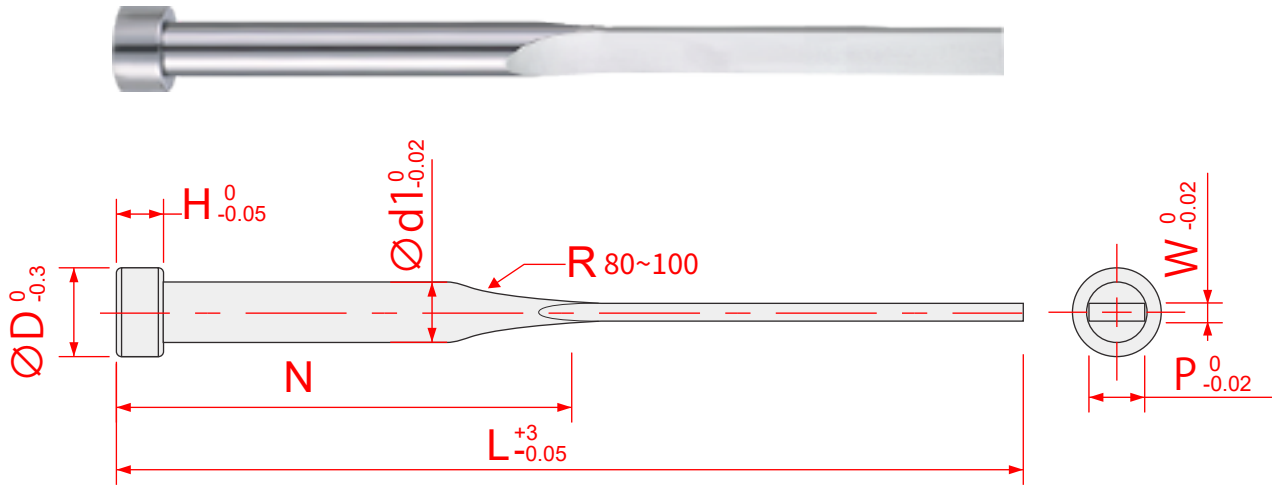
长度 (L) Length (L)				
Inch	4"	6"	8"	10"
mm	100	150	200	250

杆直径Rod Diameter(d1) 单位Unit:(mm/Inch)		杆直径Rod Diameter(d) 单位Unit:(mm/Inch)		头部直径(D) Head Diameter		头部厚度(H) Head Thickness	
mm	Inch	mm	Inch	mm	Inch	mm	Inch
3	0.1181	0.8	0.0315	6	0.2362	4	0.1575
		1	0.0394			4	0.1575
		1.5	0.0590			4	0.1575
4	0.1575	2	0.0787	8	0.3150	6	0.2362
		2.5	0.0984			6	0.2362

注  
NOTE

以上只是部分型号，我们可以根据客户的需求进行量身定制。

Note: the above is only part of the model, We could customized according to customer's requirements.



尺寸 (Size) : d1xNxWxPxL

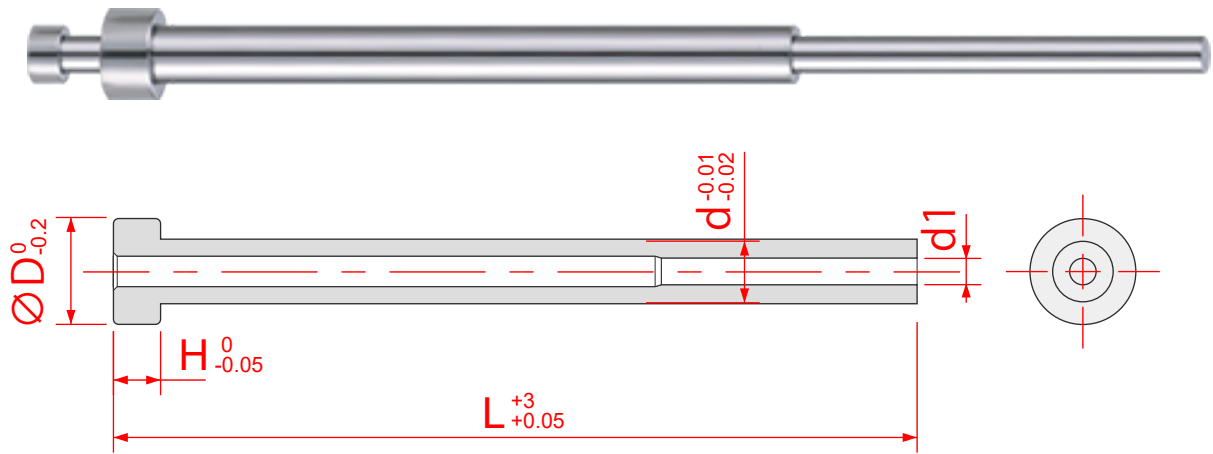
长度 (L) Length (L)									
Inch	4"	6"	8"	10"	12"	14"	16"	18"	20"
mm	100	150	200	250	300	350	400	450	500

杆直径 Rod Diameter (d1) 单位 Unit: (mm/Inch)		头部直径 (D) Head Diameter		头部厚度 (H) Head Thickness			
mm	Inch	mm	Inch	mm	Inch		
2	0.0787	6	0.2362	4	0.1575		
2.5	0.0984						
3	0.1181						
3.5	0.1378	7	0.2756	6	0.2362		
4	0.1575	8	0.3150				
4.5	0.1772						
5	0.1969						
5.5	0.2165	9	0.3543				
6	0.2362						
6.5	0.2559						
7	0.2756	10	0.3937	8	0.3150		
8	0.3150						
9	0.3543						
10	0.3937	11	0.4330				
11	0.4330						
12	0.4724						
		13	0.5118			14	0.5512
		14	0.5512				
		15	0.5906				
		16	0.6300	16	0.6693		
		17	0.6693				

注  
NOTE

以上只是部分型号，我们可以根据客户的需求进行量身定制。

Note: the above is only part of the model, We could customized according to customer's requirements.



尺寸 (Size) : dxd1xL

长度 (L)  
Length (L)

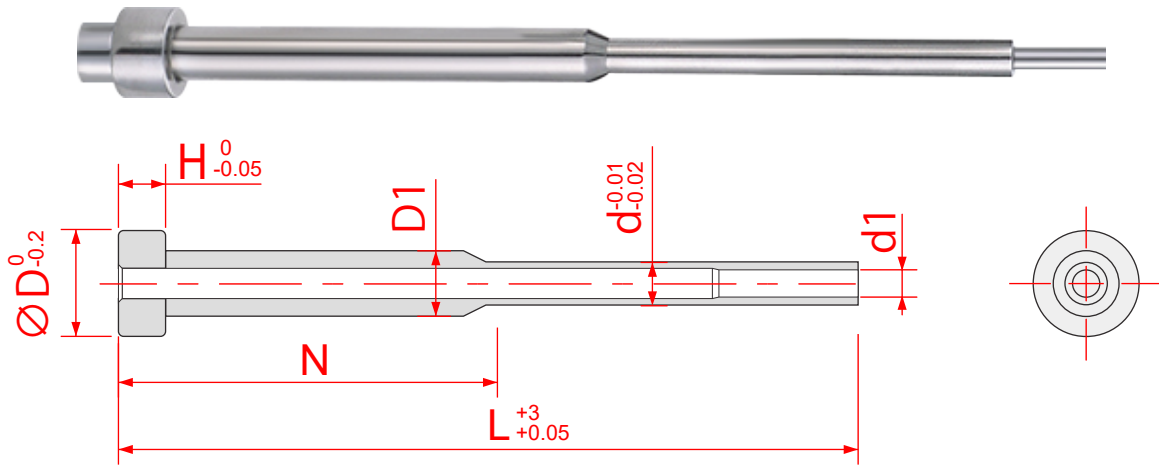
Inch	4"	6"	8"	10"	12"	14"	16"	18"	20"
mm	100	150	200	250	300	350	400	450	500

杆直径Rod Diameter(d) 单位Unit:(mm/Inch)		杆直径Rod Diameter(d1) 单位Unit:(mm/Inch)		头部直径(D) Head Diameter		头部厚度(H) Head Thickness	
mm	Inch	mm	Inch	mm	Inch	mm	Inch
4	0.1575	1.5-2	0.0590 -0.0787	8	0.3150	6	0.2559
4.5	0.1772	2-3	0.0787 -0.1181				
5	0.1969	2-3.5	0.0787 -0.1378	9	0.3543		
6	0.2362	2-4.5	0.0787 -0.1772	10	0.3937		
6.5	0.2559	2-5	0.0787 -0.1969				
7	0.2756	2-5.5	0.0787 -0.2165	11	0.4330		
8	0.3150	2-6.5	0.0787 -0.2559	13	0.5118	8	0.3150
9	0.3543	2-7.5	0.0787 -0.2953	14	0.5512		
10	0.3937	2-8	0.0787 -0.3150	15	0.5906		
12	0.4724	2-10	0.0787 -0.3937	17	0.6693		
13	0.5118	2-11	0.0787 -0.4330	18	0.7087		
14	0.5512	2-12	0.0787 -0.4724	19	0.7480		
15	0.5906	2-13	0.0787 -0.5118	20	0.7874		
16	0.6300	2-14	0.0787 -0.5512	21	0.8268		
20	0.7874	2-18	0.0787 -0.7087	25	0.9843		
25	0.9843	2-23	0.0787 -0.9055	30	1.1811		
30	1.1811	2-28	0.0787 -1.1024	35	1.3778		

注  
NOTE

以上只是部分型号，我们可以根据客户的需求进行量身定制。

Note: the above is only part of the model, We could customized according to customer's requirements.



尺寸 (Size) : D1xNxd1xL

长度 (L) Length (L)									
mm	4"	6"	8"	10"	12"	14"	16"	18"	20"
Inch	100	150	200	250	300	350	400	450	500

杆直径Rod Diameter(d) 单位Unit:(mm/Inch)		杆直径Rod Diameter(d1) 单位Unit:(mm/Inch)		杆直径Rod Diameter(D1) 单位Unit:(mm/Inch)		头部直径(D) Head Diameter		头部厚度(H) Head Thickness	
mm	Inch	mm	Inch	mm	Inch	mm	Inch	mm	Inch
2	0.0787	1.5	0.0590	3.5	0.1378	7	0.2756	4	
2.5	0.0984	2	0.0787-0.1181	4	0.1575	8	0.3150	6	0.2559
3	0.1181	2	0.0787	5	0.1969	9	0.3543		
3.5	0.1378	2-4.5	0.0787-0.1772	6	0.2362	10	0.3937		
4	0.1575	2-5.5	0.0787-0.2165	7	0.2756	11	0.4330		
4.5	0.1772	2	0.0787	8	0.3150	13	0.5118	8	0.3150
5	0.1969	3	0.1181	9	0.3543	14	0.5512		
6	0.2362	3-3.5	0.0787-0.1378	10	0.3937	15	0.5906		
7	0.2756	3-4	0.0787-0.1575	12	0.4724	17	0.6693		
8	0.3150	3-5	0.0787-0.1969	13	0.5118	18	0.7087		
10	0.3937	4-6	0.1575-0.2362	14	0.5512	19	0.7480		
10	0.3937	4-8	0.1575-0.3150	15	0.5906	20	0.7874		
12	0.4724	4-8	0.1575-0.3150	16	0.6300	21	0.8268		
				20	0.7874	25	0.9843		
				25	0.9843	30	1.1811		
				30	1.1811	35	1.3778		

注  
NOTE

以上只是部分型号，我们可以根据客户的需求进行量身定制。

Note: the above is only part of the model, We could customized according to customer's requirements.